



Voyager Point

3  2  2 

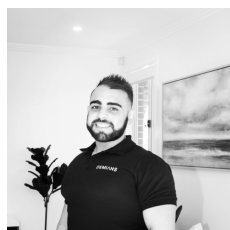
This immaculate single-level 3-bedroom home is situated in the prestigious suburb of Voyager Point, offering a versatile floor plan and low-maintenance living.

The location offers an exceptional balance of peace and accessibility, enveloping residents in the serene surroundings of Voyager Point while providing convenient proximity to essential amenities.

With Holsworthy Train Station and nearby motorways like Heathcote Road, M5 & M7, easily accessible, commuting is streamlined. Notably, the East Hills footbridge stands out as a distinctive feature, enhancing connectivity for residents.

Furthermore, residents can easily access Wattle Grove Plaza and enjoy a short drive to Menai Central, ensuring a

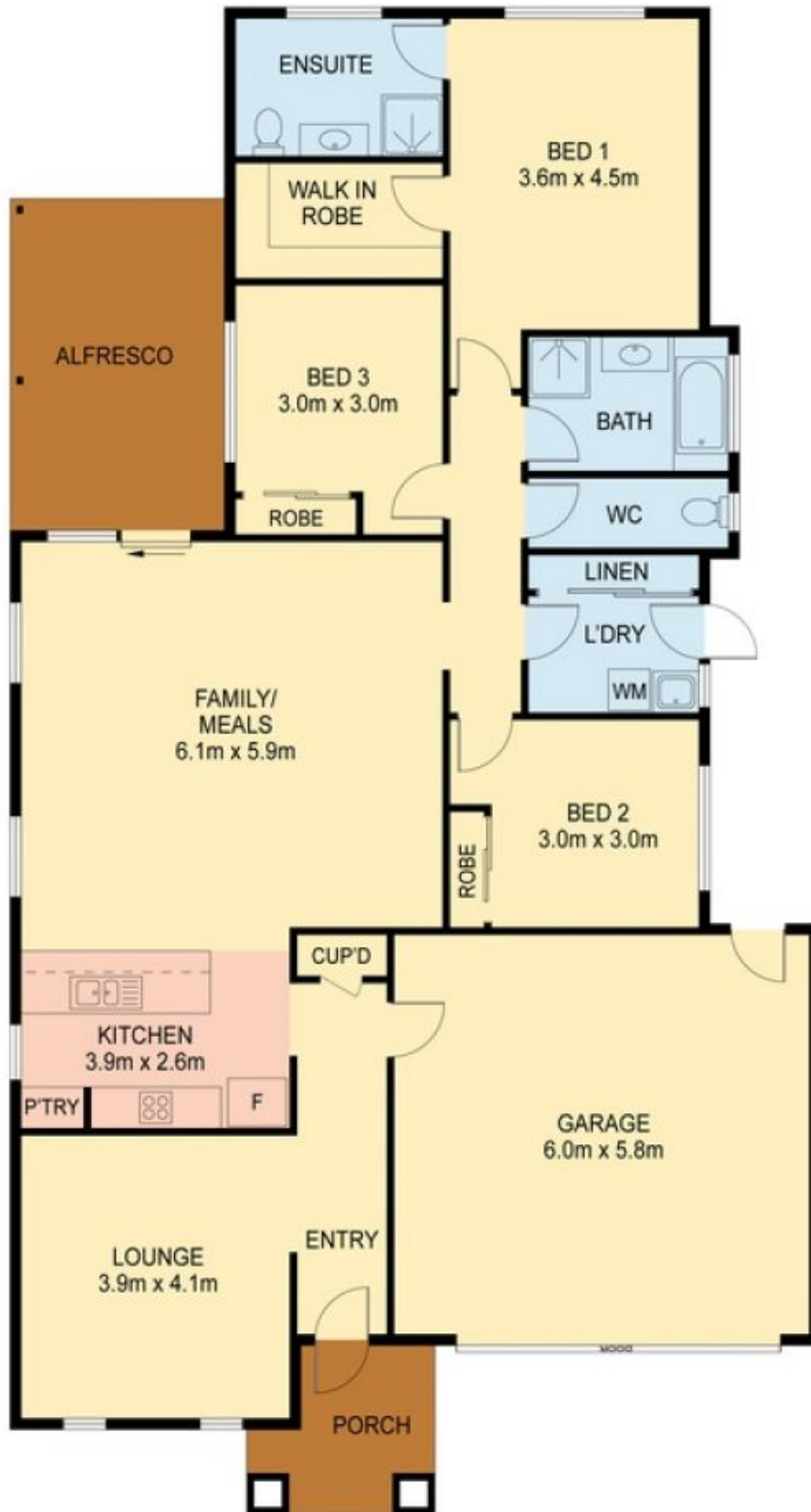
Price : Price guide \$1,200,000 to \$1,300,000
Land Size : 450 sqm
View : <https://www.demians.com.au/sale/nsw/sutherland/voyager-point/residential/house/7980242>



Michael Demian
0472 586 350



Mark Demian
0452 625 697



VOYAGER POINT

Disclaimer: This Floor plan and/or site plan is an approximation for illustration purposes only.
All measurements are approximate and not guaranteed to be exact or to scale
Interested parties should confirm measurements by their own means



Internal Area: 181 sqm

SCALE

