



## 4 Wenton Road Holsworthy NSW

3 2 1

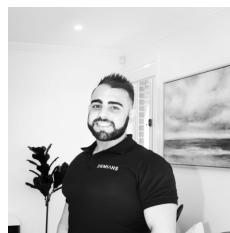
Positioned for ultimate convenience, in the Mornington Holsworthy estate, this stunning Mirvac built residence offers a lifestyle of comfort and ease, just a minute's walk from Holsworthy train station. Enjoying a prime location, commuting is a breeze, with easy access to nearby amenities and schools.

Presenting a well-appointed living environment without compromising on quality or lifestyle it offers a blend of space, natural light and absolute comfort right throughout every inch of the home.

An excellent opportunity awaits to own a Torrens title property with a versatile layout and easy, low-maintenance living, appealing to a diverse range of potential buyers, including investors, first-time homeowners, young families, or those looking to downsize.

**Price** : \$ 920,000

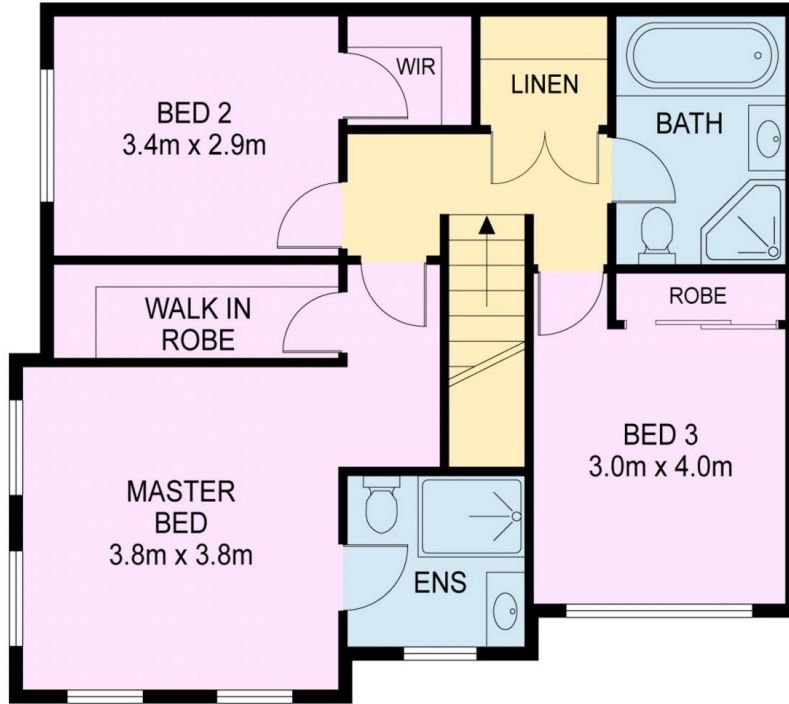
**View** : <https://www.demians.com.au/sale/nsw/liverpool-airfield/holsworthy/residential/house/7937844>



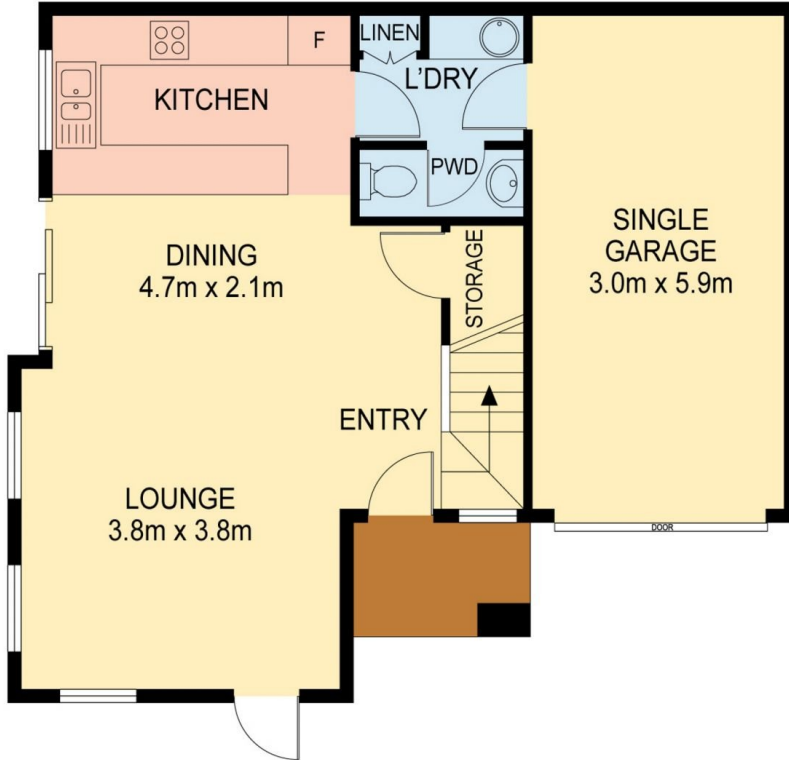
**Michael Demian**  
0472 586 350



**Mark Demian**  
0452 625 697



**FIRST FLOOR**



**GROUND FLOOR**

**4 WENTON ROAD, HOLSWORTHY**

Disclaimer: This Floor plan and/or site plan is an approximation for illustration purposes only.  
All measurements are approximate and not guaranteed to be exact or to scale  
Interested parties should confirm measurements by their own means

Internal Area: 131 sqm

**SCALE**

